

Alaska Department of Fish and Game

Habitat Section
Southeast Region



182-70-10100-2022 Tributary 2

ADDITION

Water body name:

Survey date: 9/14/2024

Quad: Yakutat C-4

Species & Lifestage: CO, DV, SB

Upper Reach Latitude: 59.579844 **Longitude:** -139.466156

Survey crew: CD, FC

Lower Reach Latitude: 59.579268 **Longitude:** -139.467824

Findings: We surveyed this uncataloged stream from the road using baited minnow traps and GPS and captured juvenile coho salmon, Dolly Varden, and stickleback (Figure 1). The stream is slow moving through a wetland and the culvert appears to be overgrown and possibly blocked with debris (Table 1; Figures 2, 3). In its current state the culvert may block fish passage and future investigation upstream is recommended.

Recommendations: Add this uncataloged stream to the anadromous waters catalog for rearing coho salmon (Figure 4).

Nomination: Pending

Table 1.–182-70-10100 2022 Tributary 2 survey data.

Waypoint	Latitude	Longitude	Notes	Stream Width ft	Stream Substrate	Habitat Features	Gradient %	Sample Effort	Sample Results
1223	59.579844	-139.466156	Ponded water downstream of road. 2-3ft corrugated metal pipe overgrown. Upstream side of culvert is blocked with vegetation and moss. Setting MT under higher water conditions than previous survey efforts.	8-10	Large Gravel		0-1	MT	2 CO 1 DV 1 SB



Figure 1.–Juvenile coho salmon and Dolly Varden captured at waypoint 1223.



Figure 2.—Water ponded downstream of the culvert.



Figure 3.—Ponded water upstream of the culvert.

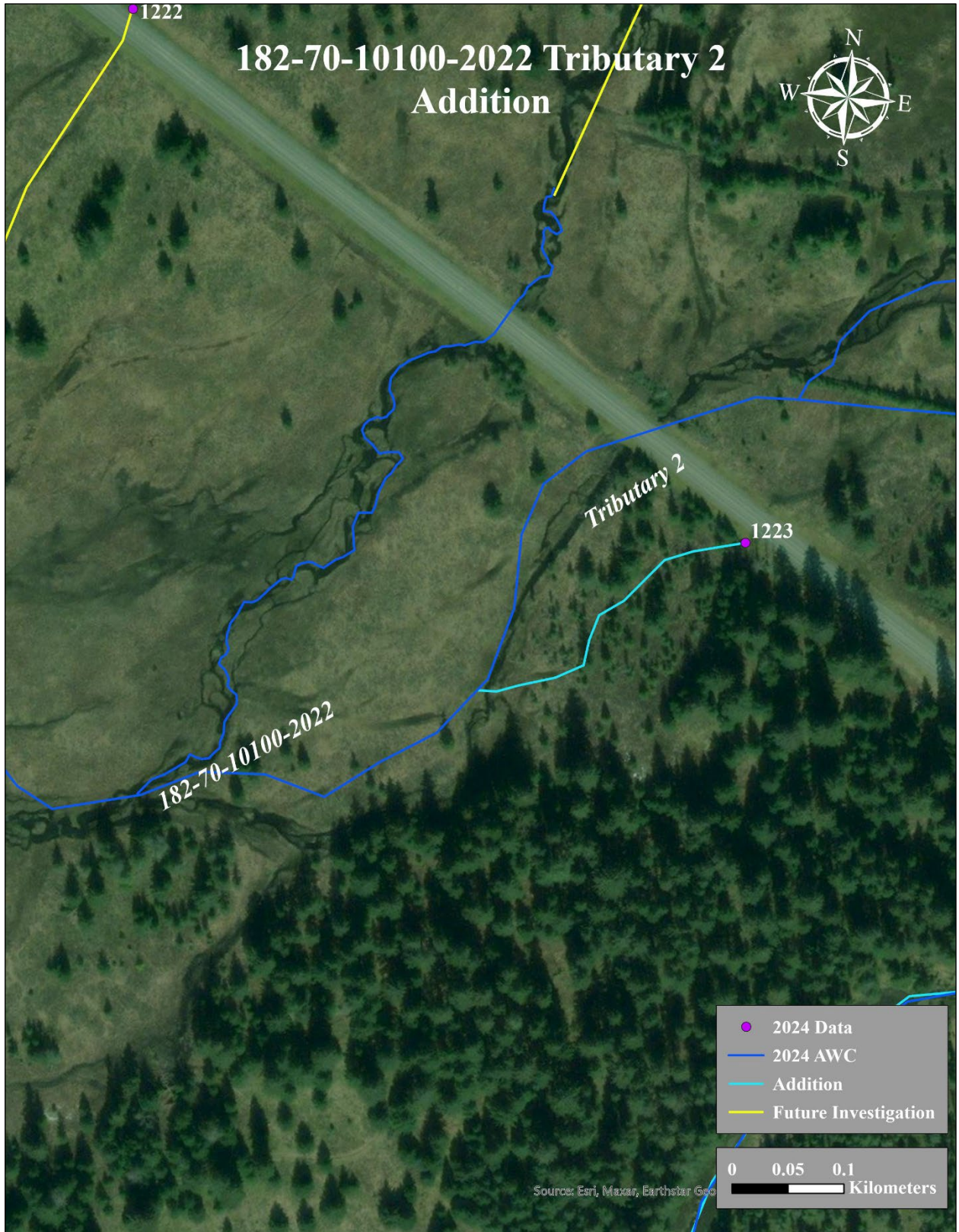


Figure 4.–187-70-10100-2022 tributary 2 addition map.